

TORRES SHIRE

TORRES SHIRE

NORTHERN PENINSULA AREA REGIONAL



COOK SHIRE COUNCIL PLANNING SCHEME OVERLAY MAP

Flood and Other Coastal Hazards Overlay

Rural Locality 1

Legend

- High Hazard Area
- Medium Hazard Area
- Potential Flood Hazard Area
- Erosion Prone Area*

*Note:
The Erosion Prone Area is based on data generated by the State of Queensland and is indicative only. To determine the exact extent of the Erosion Prone Area, please refer to the statutory mapping available at:
<https://www.ehp.qld.gov.au/coastal/management/maps/index.html>

- Cook Shire Boundary
- Adjoining Local Governments
- Lot Boundaries
- Roads

Disclaimer
While every care is taken to ensure the accuracy of this map, Cook Shire Council makes no representations or warranties about its accuracy, reliability, completeness or suitability for any particular purpose and disclaims all responsibility and all liability (including without limitation, liability in negligence) for all expenses, losses, damage (including direct or consequential damage) and costs which might incur as a result of the data being inaccurate or incomplete in any way and for any reason.
© Copyright Cook Shire Council

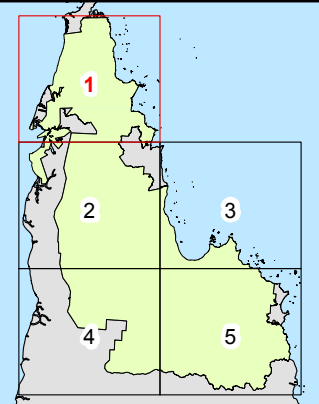
Cadastral Disclaimer
Despite the State of Queensland's best efforts, the Queensland Government makes no representations or warranties in relation to the information, and, to the extent permitted by law, exclude or limit all warranties relating to correctness, accuracy, reliability, completeness, or currency and all liability for any direct, indirect or consequential costs, losses, damages and expenses incurred in any way (including but not limited to that arising from negligence) in connection with any use of or reliance on the information.
© The State of Queensland (2016)

Geocentric Datum of Australia 1994 (GDA94) - Map Grid of Australia - Zone 54

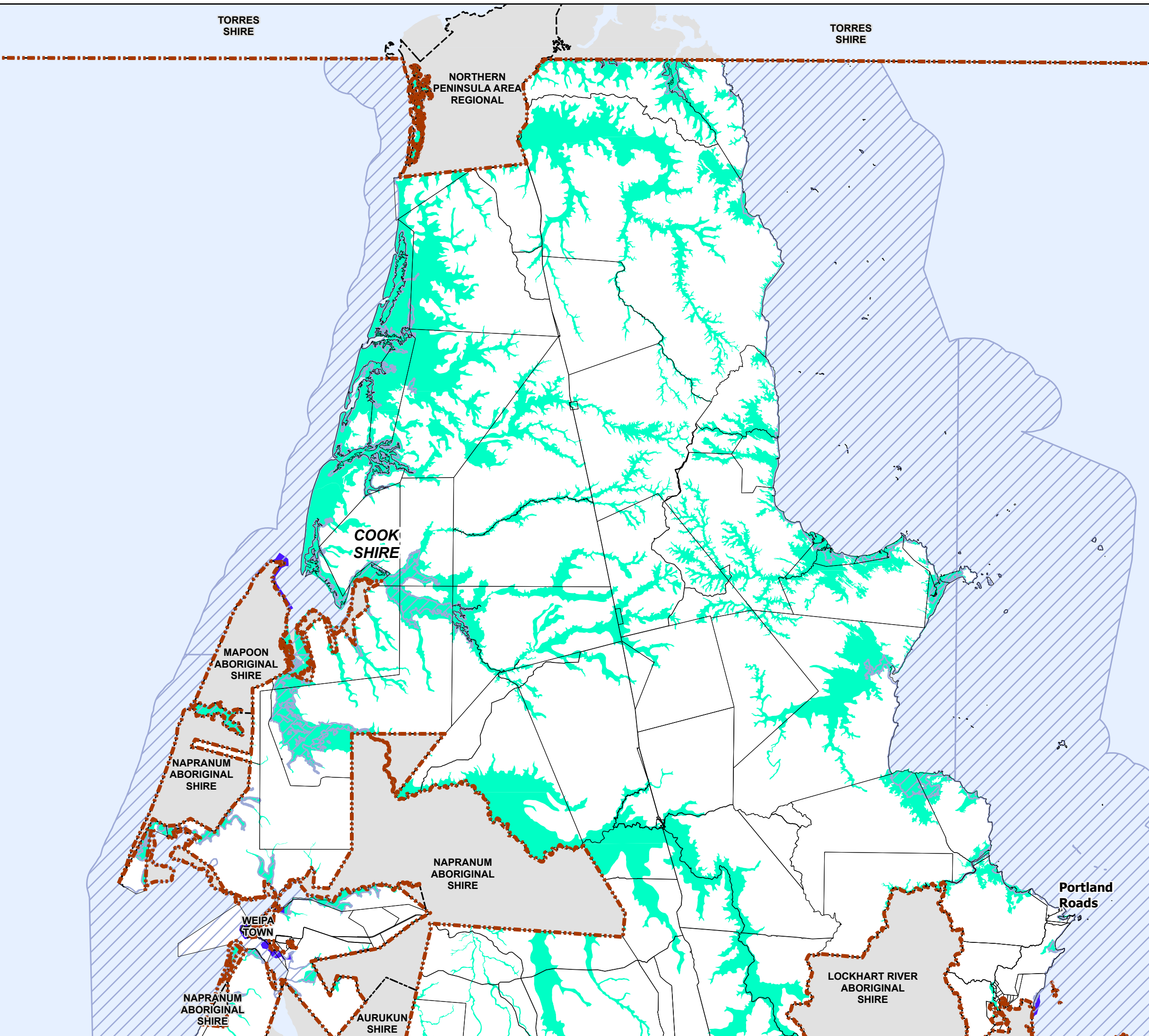
Scale: 1:750,000 1 cm = 7,500 m (A3 Print)

Date: 28/04/2016

INDEX MAP







Overlay Map - OM5.1



**Flood and Other Coastal Hazards
Overlay**

Rural Locality 2

Legend

-  High Hazard Area
-  Medium Hazard Area
-  Potential Flood Hazard Area
-  Erosion Prone Area*

***Note:**
The Erosion Prone Area is based on data generated by the State of Queensland and is indicative only. To determine the exact extent of the Erosion Prone Area, please refer to the statutory mapping available at:
<https://www.ehp.qld.gov.au/coastal/management/maps/index.html>

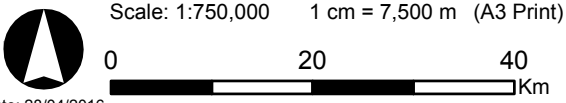
-  Cook Shire Boundary
-  Adjoining Local Governments
-  Lot Boundaries
-  Roads

Disclaimer
While every care is taken to ensure the accuracy of this map, Cook Shire Council makes no representations or warranties about its accuracy, reliability, completeness or suitability for any particular purpose and disclaims all responsibility and all liability (including without limitation, liability in negligence) for all expenses, losses, damage (including direct or consequential damage) and costs which might incur as a result of the data being inaccurate or incomplete in any way and for any reason.
© Copyright Cook Shire Council

Cadastral Disclaimer
Despite the State of Queensland's best efforts, the Queensland Government makes no representations or warranties in relation to the information, and, to the extent permitted by law, exclude or limit all warranties relating to correctness, accuracy, reliability, completeness, or currency and all liability for any direct, indirect or consequential costs, losses, damages and expenses incurred in any way (including but not limited to that arising from negligence) in connection with any use of or reliance on the information.
© The State of Queensland (2016)

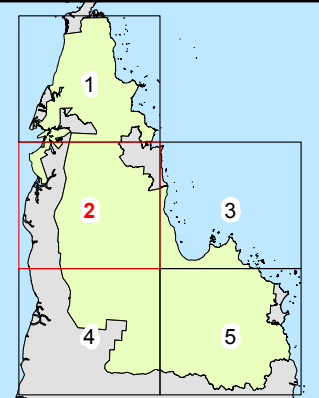
Geocentric Datum of Australia 1994 (GDA94) - Map Grid of Australia - Zone 54

Scale: 1:750,000 1 cm = 7,500 m (A3 Print)

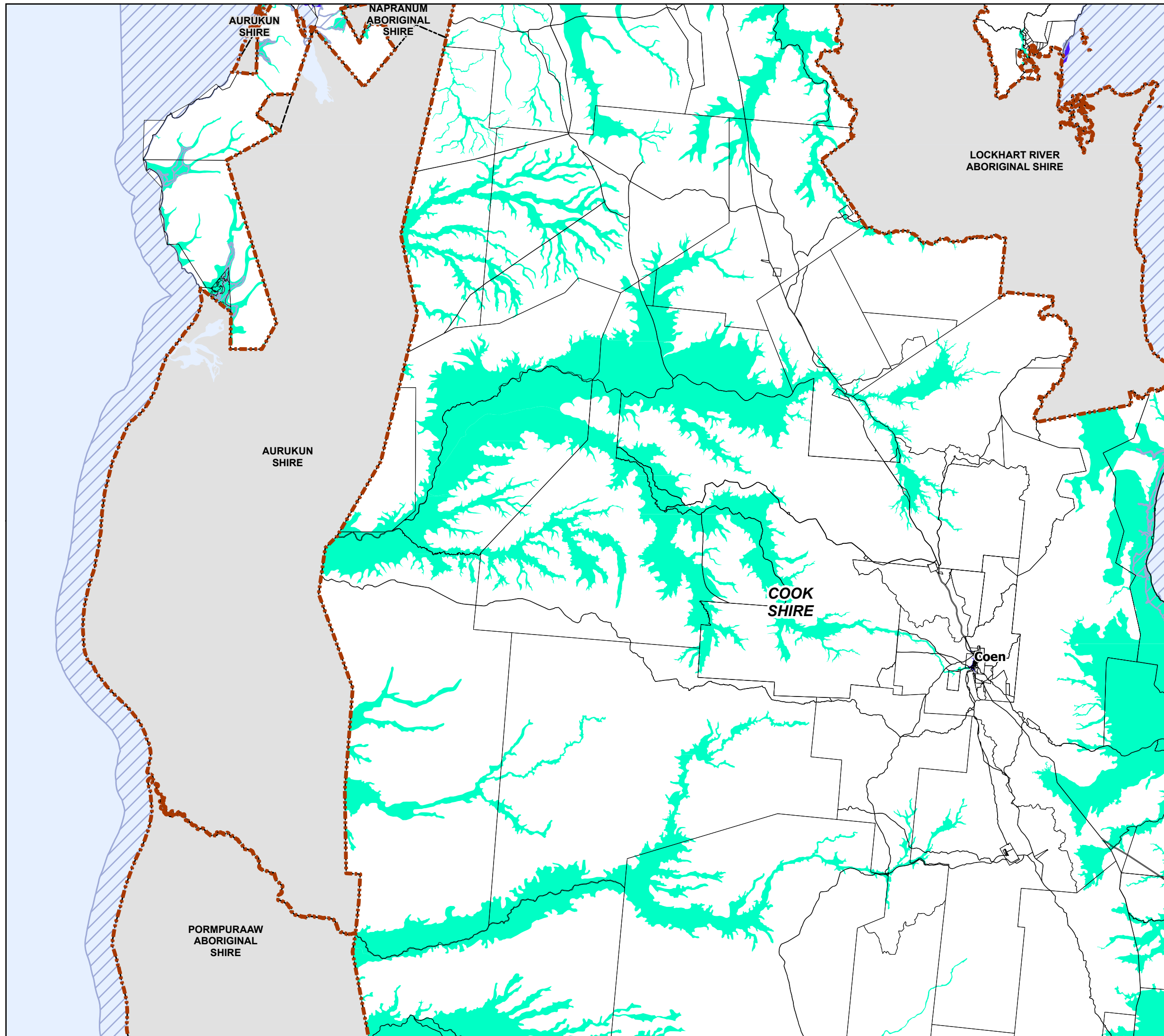


Date: 28/04/2016

INDEX MAP



Overlay Map - OM5.2



**Flood and Other Coastal Hazards
Overlay**

Rural Locality 3

Legend

- High Hazard Area
- Medium Hazard Area
- Potential Flood Hazard Area
- Erosion Prone Area*

***Note:**
The Erosion Prone Area is based on data generated by the State of Queensland and is indicative only. To determine the exact extent of the Erosion Prone Area, please refer to the statutory mapping available at:
<https://www.ehp.qld.gov.au/coastal/management/maps/index.html>


- Cook Shire Boundary
- Adjoining Local Governments
- Lot Boundaries
- Roads

Disclaimer
While every care is taken to ensure the accuracy of this map, Cook Shire Council makes no representations or warranties about its accuracy, reliability, completeness or suitability for any particular purpose and disclaims all responsibility and all liability (including without limitation, liability in negligence) for all expenses, losses, damage (including direct or consequential damage) and costs which might incur as a result of the data being inaccurate or incomplete in any way and for any reason.
© Copyright Cook Shire Council

Cadastral Disclaimer
Despite the State of Queensland's best efforts, the Queensland Government makes no representations or warranties in relation to the information, and, to the extent permitted by law, exclude or limit all warranties relating to correctness, accuracy, reliability, completeness, or currency and all liability for any direct, indirect or consequential costs, losses, damages and expenses incurred in any way (including but not limited to that arising from negligence) in connection with any use of or reliance on the information.
© The State of Queensland (2016)

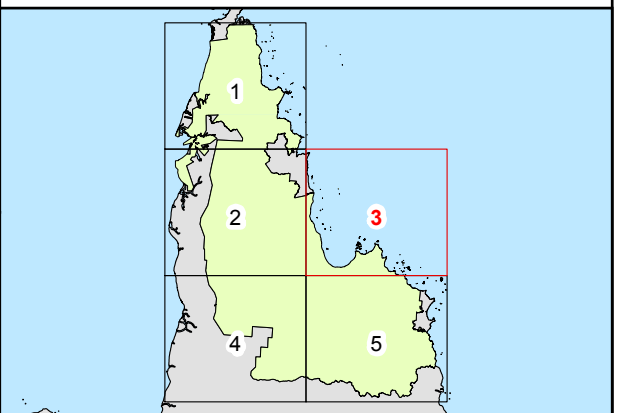
Geocentric Datum of Australia 1994 (GDA94) - Map Grid of Australia - Zone 55

Scale: 1:750,000 1 cm = 7,500 m (A3 Print)

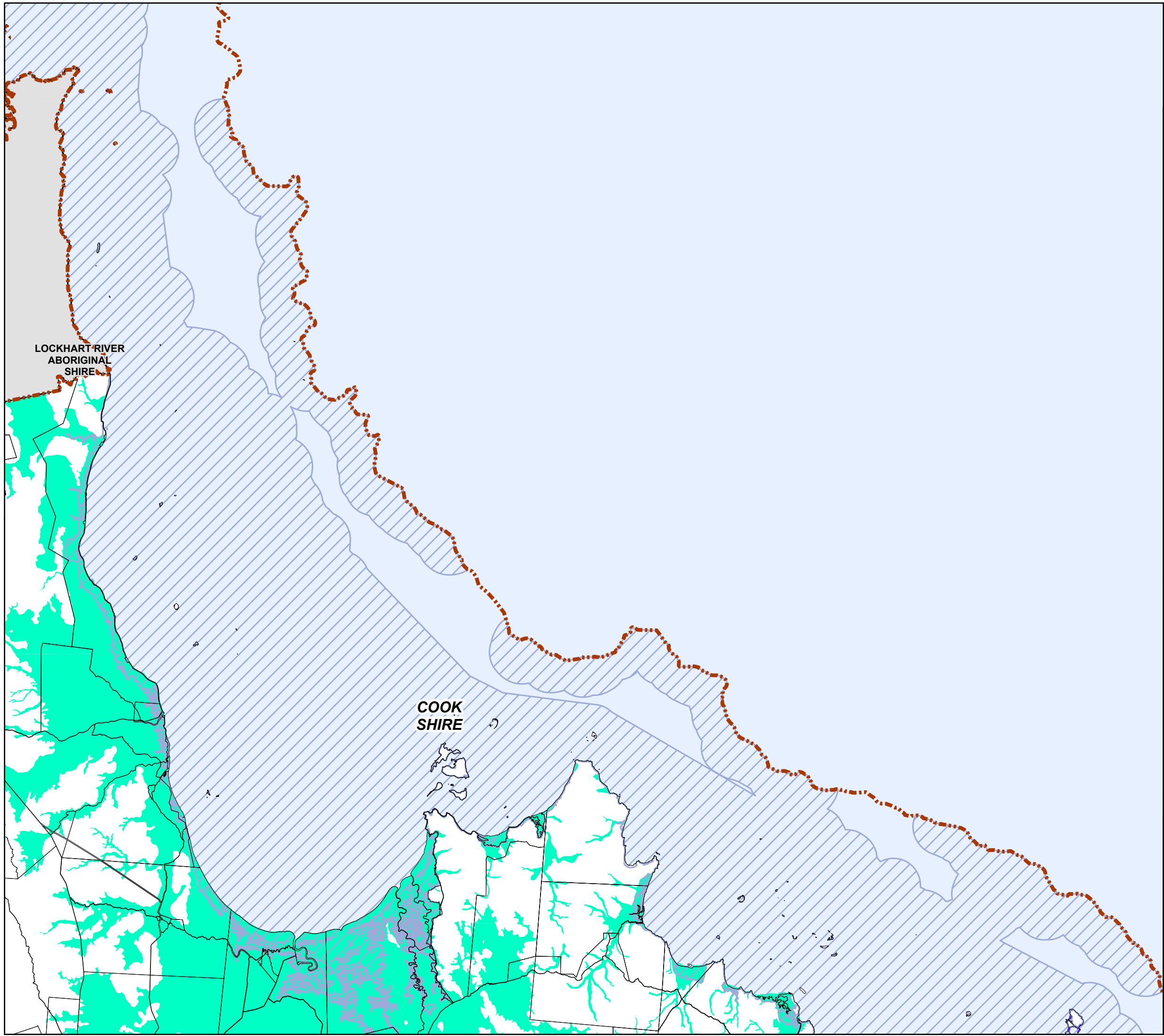


Date: 28/04/2016

INDEX MAP





Overlay Map - OM5.3



**Flood and Other Coastal Hazards
Overlay**

Rural Locality 4

Legend

-  Potential Flood Hazard Area
-  Erosion Prone Area*

***Note:**
The Erosion Prone Area is based on data generated by the State of Queensland and is indicative only. To determine the exact extent of the Erosion Prone Area, please refer to the statutory mapping available at:
<https://www.ehp.qld.gov.au/coastal/management/maps/index.html>

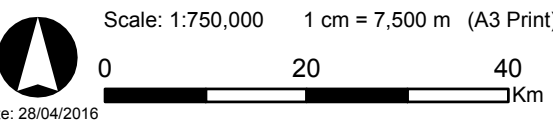
-  Cook Shire Boundary
-  Adjoining Local Governments
-  Lot Boundaries
-  Roads

Disclaimer
While every care is taken to ensure the accuracy of this map, Cook Shire Council makes no representations or warranties about its accuracy, reliability, completeness or suitability for any particular purpose and disclaims all responsibility and all liability (including without limitation, liability in negligence) for all expenses, losses, damage (including direct or consequential damage) and costs which might incur as a result of the data being inaccurate or incomplete in any way and for any reason.
© Copyright Cook Shire Council

Cadastral Disclaimer
Despite the State of Queensland's best efforts, the Queensland Government makes no representations or warranties in relation to the information, and, to the extent permitted by law, exclude or limit all warranties relating to correctness, accuracy, reliability, completeness, or currency and all liability for any direct, indirect or consequential costs, losses, damages and expenses incurred in any way (including but not limited to that arising from negligence) in connection with any use of or reliance on the information.
© The State of Queensland (2016)

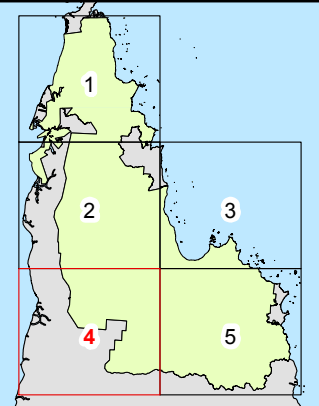
Geocentric Datum of Australia 1994 (GDA94) - Map Grid of Australia - Zone 54

Scale: 1:750,000 1 cm = 7,500 m (A3 Print)

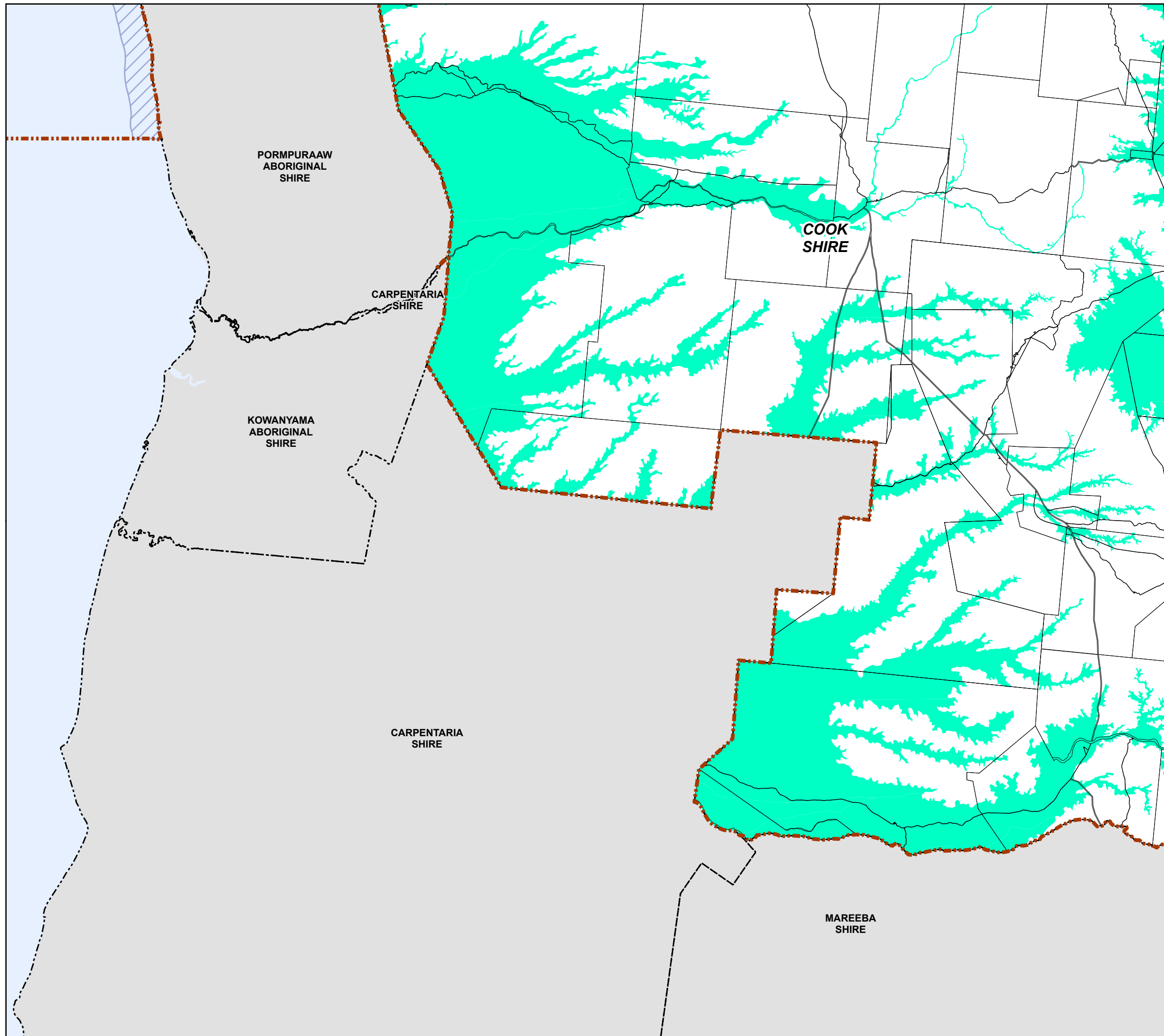


Date: 28/04/2016

INDEX MAP







Overlay Map - OM5.4



**Flood and Other Coastal Hazards
Overlay**

Rural Locality 5

Legend

-  High Hazard Area
-  Medium Hazard Area
-  Potential Flood Hazard Area
-  Erosion Prone Area*

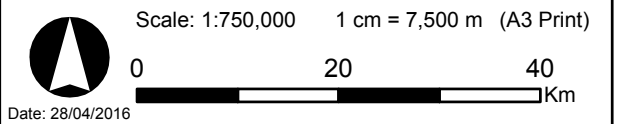
*Note:
The Erosion Prone Area is based on data generated by the State of Queensland and is indicative only. To determine the exact extent of the Erosion Prone Area, please refer to the statutory mapping available at:
<https://www.ehp.qld.gov.au/coastal/management/maps/index.html>

-  Cook Shire Boundary
-  Adjoining Local Governments
-  Lot Boundaries
-  Roads

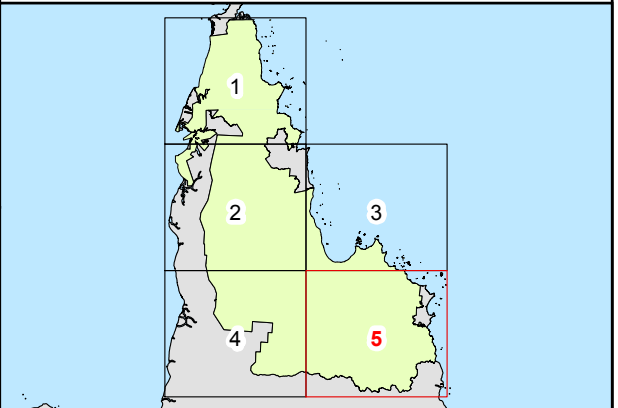
Disclaimer
While every care is taken to ensure the accuracy of this map, Cook Shire Council makes no representations or warranties about its accuracy, reliability, completeness or suitability for any particular purpose and disclaims all responsibility and all liability (including without limitation, liability in negligence) for all expenses, losses, damage (including direct or consequential damage) and costs which might incur as a result of the data being inaccurate or incomplete in any way and for any reason.
© Copyright Cook Shire Council

Cadastral Disclaimer
Despite the State of Queensland's best efforts, the Queensland Government makes no representations or warranties in relation to the information, and, to the extent permitted by law, exclude or limit all warranties relating to correctness, accuracy, reliability, completeness, or currency and all liability for any direct, indirect or consequential costs, losses, damages and expenses incurred in any way (including but not limited to that arising from negligence) in connection with any use of or reliance on the information.
© The State of Queensland (2016)

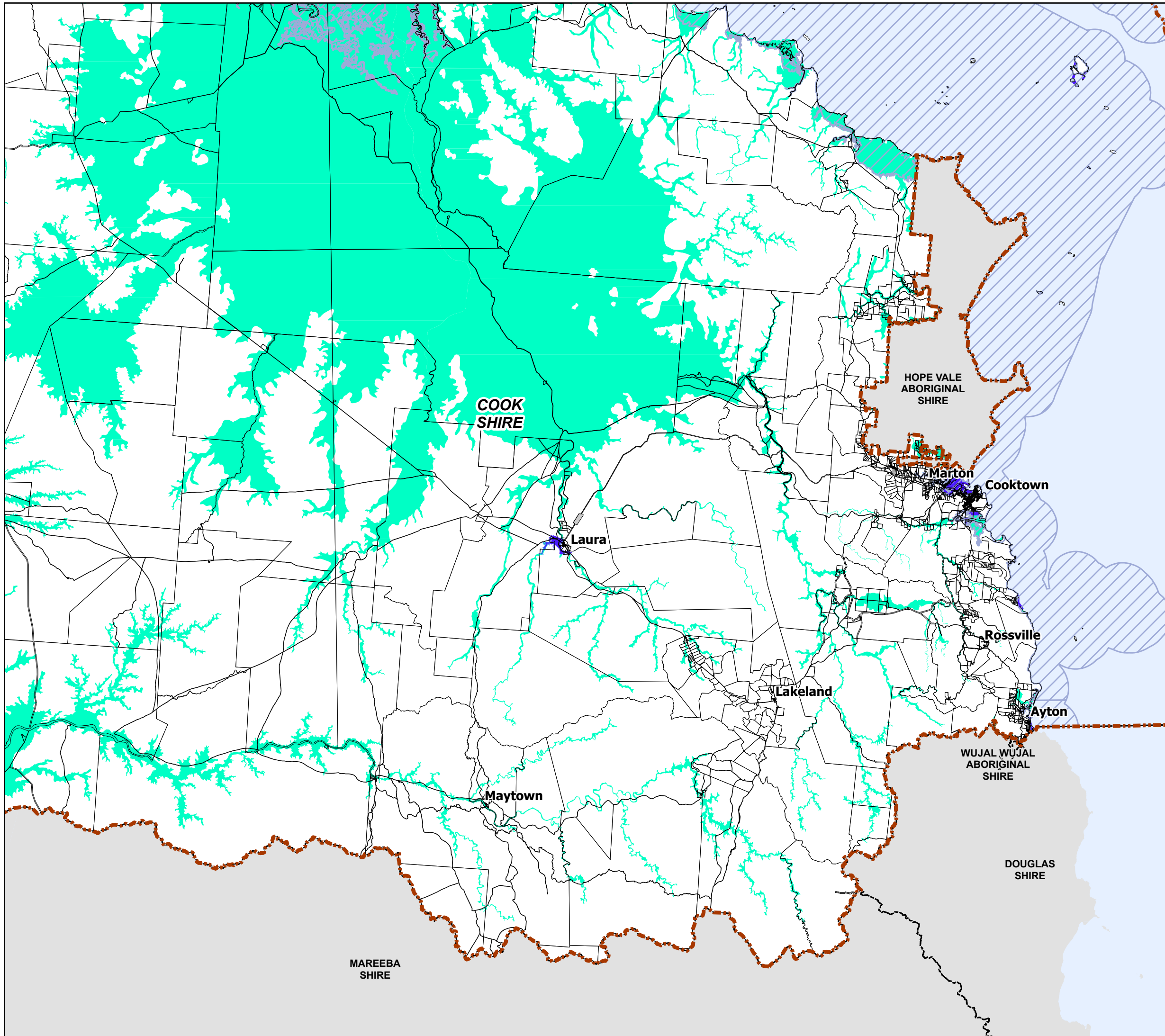
Geocentric Datum of Australia 1994 (GDA94) - Map Grid of Australia - Zone 55



INDEX MAP



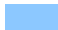



Overlay Map - OM5.5



**Flood and Other Coastal Hazards
Overlay**

Cooktown Locality

Legend

-  Medium Hazard Area (Storm Tide Inundation)
-  High Hazard Area (Storm Tide Inundation)
-  Potential Flood Hazard Area
-  Erosion Prone Area*

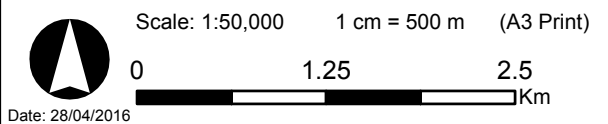
***Note:**
The Erosion Prone Area is based on data generated by the State of Queensland and is indicative only. To determine the exact extent of the Erosion Prone Area, please refer to the statutory mapping available at:
<https://www.ehp.qld.gov.au/coastal/management/maps/index.html>

-  Cook Shire Boundary
-  Adjoining Local Governments
-  Lot Boundaries
-  Roads

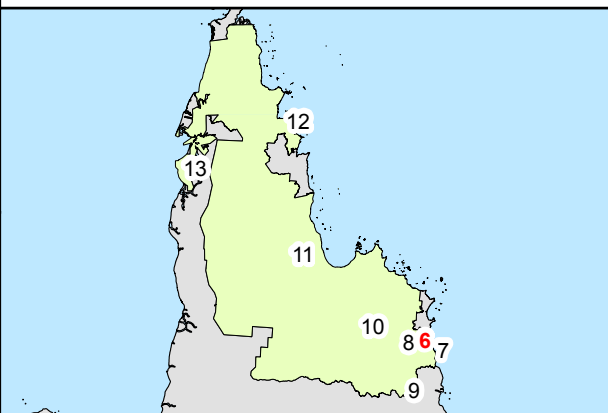
Disclaimer
While every care is taken to ensure the accuracy of this map, Cook Shire Council makes no representations or warranties about its accuracy, reliability, completeness or suitability for any particular purpose and disclaims all responsibility and all liability (including without limitation, liability in negligence) for all expenses, losses, damage (including direct or consequential damage) and costs which might incur as a result of the data being inaccurate or incomplete in any way and for any reason.
© Copyright Cook Shire Council

Cadastral Disclaimer
Despite the State of Queensland's best efforts, the Queensland Government makes no representations or warranties in relation to the information, and, to the extent permitted by law, exclude or limit all warranties relating to correctness, accuracy, reliability, completeness, or currency and all liability for any direct, indirect or consequential costs, losses, damages and expenses incurred in any way (including but not limited to that arising from negligence) in connection with any use of or reliance on the information.
© The State of Queensland (2016)

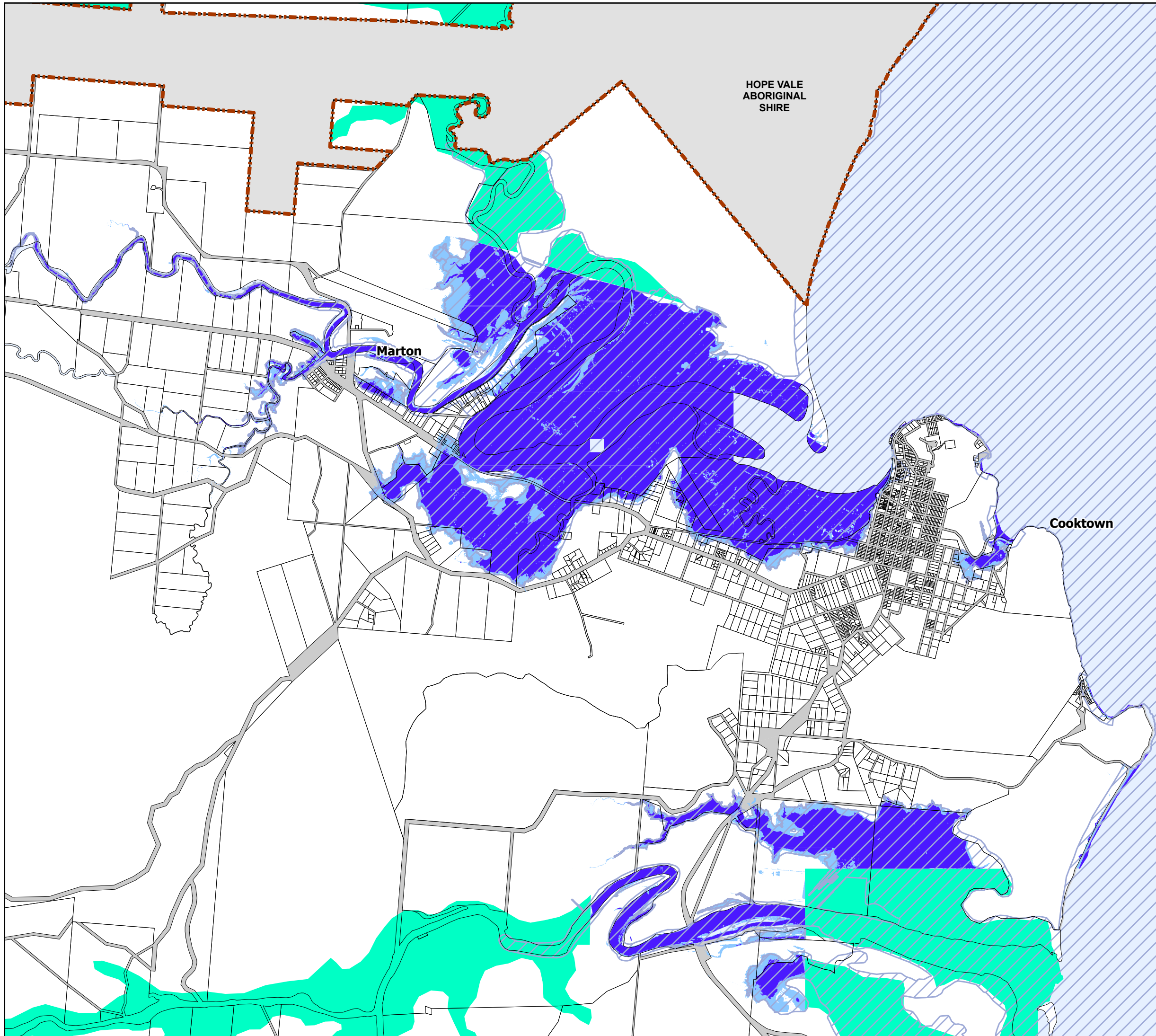
Geocentric Datum of Australia 1994 (GDA94) - Map Grid of Australia - Zone 55



INDEX MAP



Overlay Map - OM5.6







HOPE VALE
ABORIGINAL
SHIRE

**Flood and Other Coastal Hazards
Overlay**

Ayton

Legend

-  Medium Hazard Area (Storm Tide Inundation)
-  High Hazard Area (Storm Tide Inundation)
-  Potential Flood Hazard Area
-  Erosion Prone Area*

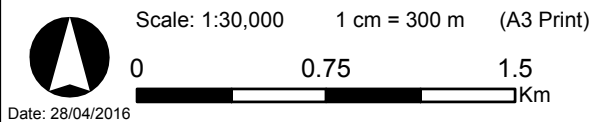
***Note:**
The Erosion Prone Area is based on data generated by the State of Queensland and is indicative only. To determine the exact extent of the Erosion Prone Area, please refer to the statutory mapping available at:
<https://www.ehp.qld.gov.au/coastal/management/maps/index.html>

-  Cook Shire Boundary
-  Adjoining Local Governments
-  Lot Boundaries
-  Roads

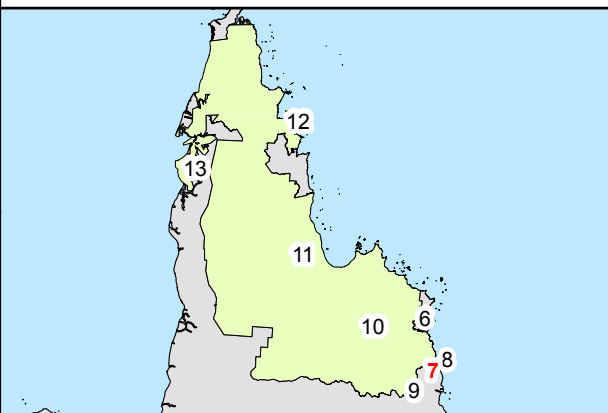
Disclaimer
While every care is taken to ensure the accuracy of this map, Cook Shire Council makes no representations or warranties about its accuracy, reliability, completeness or suitability for any particular purpose and disclaims all responsibility and all liability (including without limitation, liability in negligence) for all expenses, losses, damage (including direct or consequential damage) and costs which might incur as a result of the data being inaccurate or incomplete in any way and for any reason.
© Copyright Cook Shire Council

Cadastral Disclaimer
Despite the State of Queensland's best efforts, the Queensland Government makes no representations or warranties in relation to the information, and, to the extent permitted by law, exclude or limit all warranties relating to correctness, accuracy, reliability, completeness, or currency and all liability for any direct, indirect or consequential costs, losses, damages and expenses incurred in any way (including but not limited to that arising from negligence) in connection with any use of or reliance on the information.
© The State of Queensland (2016)

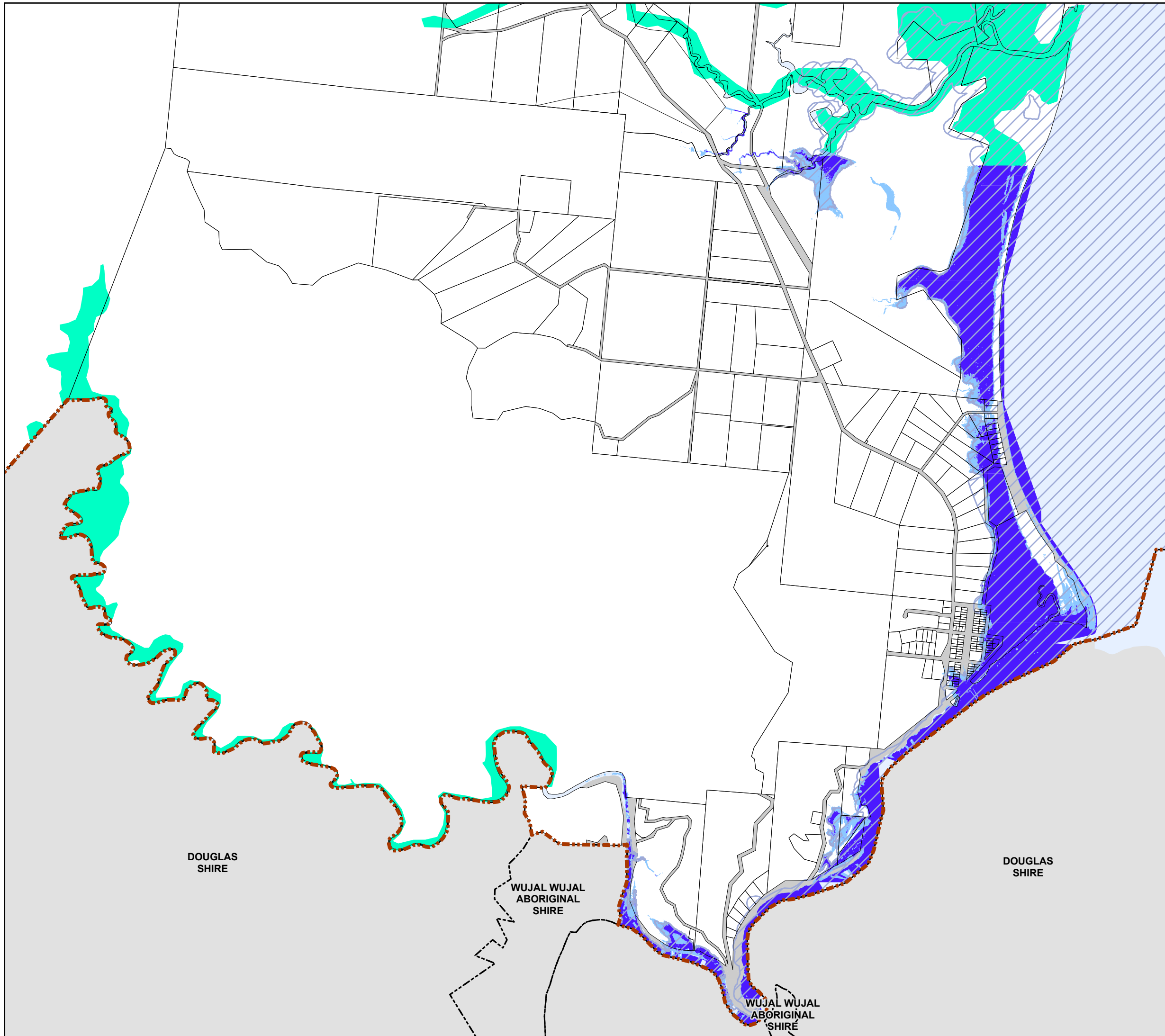
Geocentric Datum of Australia 1994 (GDA94) - Map Grid of Australia - Zone 55



INDEX MAP




Overlay Map - OM5.7



**Flood and Other Coastal Hazards
Overlay**

Rossville

Legend

 Potential Flood Hazard Area


***Note:**
The Erosion Prone Area is based on data generated by the State of Queensland and is indicative only. To determine the exact extent of the Erosion Prone Area, please refer to the statutory mapping available at:
<https://www.ehp.qld.gov.au/coastal/management/maps/index.html>

 Cook Shire Boundary  Adjoining Local Governments
 Lot Boundaries  Roads

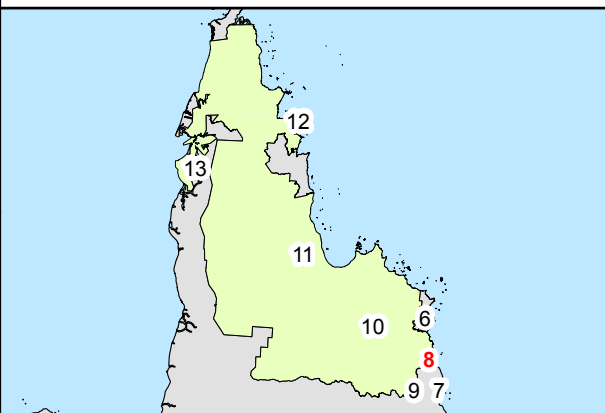
Disclaimer
While every care is taken to ensure the accuracy of this map, Cook Shire Council makes no representations or warranties about its accuracy, reliability, completeness or suitability for any particular purpose and disclaims all responsibility and all liability (including without limitation, liability in negligence) for all expenses, losses, damage (including direct or consequential damage) and costs which might incur as a result of the data being inaccurate or incomplete in any way and for any reason.
© Copyright Cook Shire Council

Cadastral Disclaimer
Despite the State of Queensland's best efforts, the Queensland Government makes no representations or warranties in relation to the information, and, to the extent permitted by law, exclude or limit all warranties relating to correctness, accuracy, reliability, completeness, or currency and all liability for any direct, indirect or consequential costs, losses, damages and expenses incurred in any way (including but not limited to that arising from negligence) in connection with any use of or reliance on the information.
© The State of Queensland (2016)

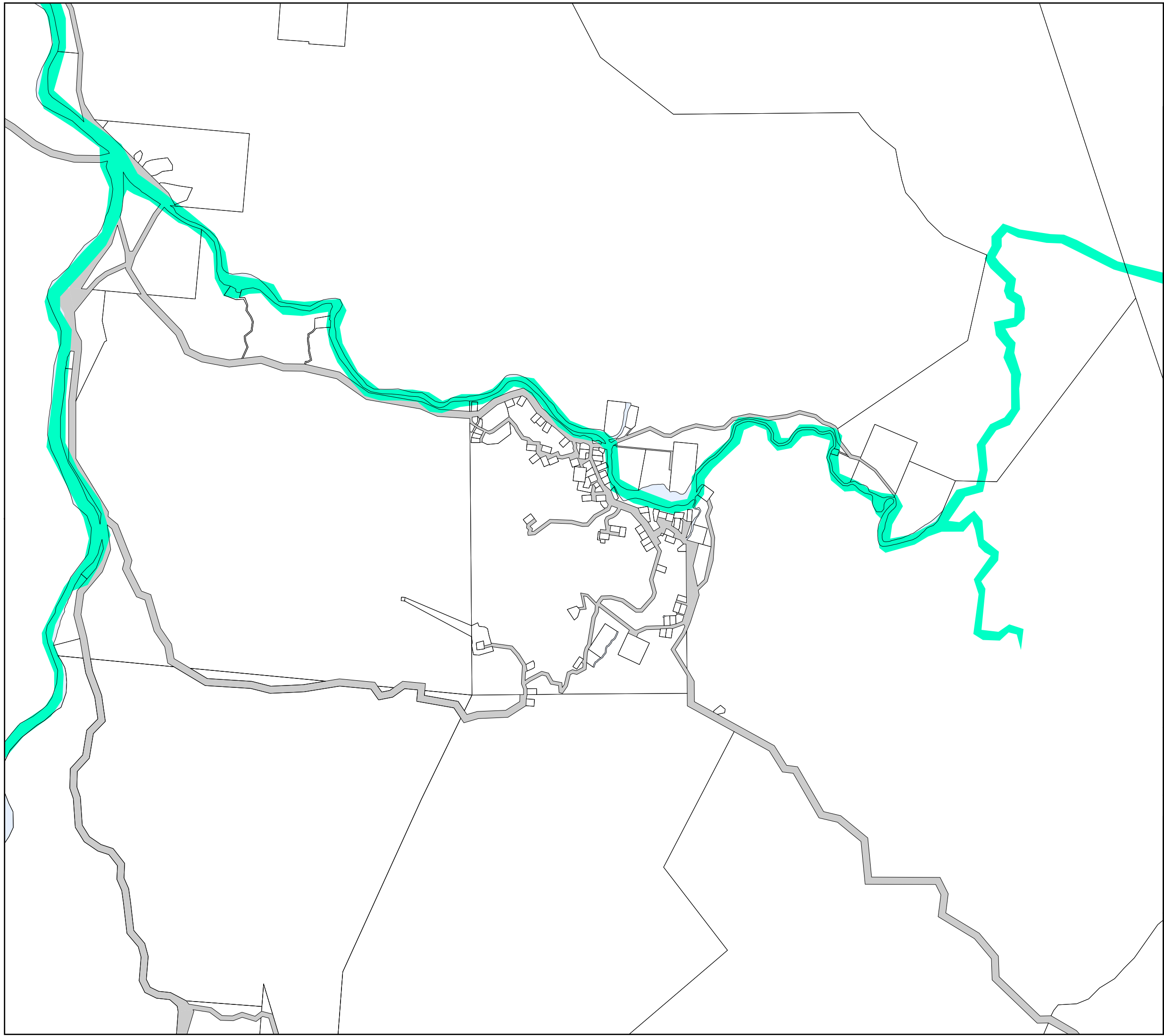
Geocentric Datum of Australia 1994 (GDA94) - Map Grid of Australia - Zone 55

Scale: 1:30,000 1 cm = 300 m (A3 Print)
 0 0.75 1.5
Date: 28/04/2016 Km

INDEX MAP



Overlay Map - OM5.8





Cook Shire
COUNCIL

**COOK SHIRE COUNCIL
PLANNING SCHEME
OVERLAY MAP**

**Flood and Other Coastal Hazards
Overlay**

Lakeland

Legend

 Potential Flood Hazard Area


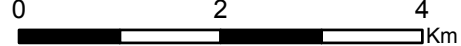
***Note:**
The Erosion Prone Area is based on data generated by the State of Queensland and is indicative only. To determine the exact extent of the Erosion Prone Area, please refer to the statutory mapping available at:
<https://www.ehp.qld.gov.au/coastal/management/maps/index.html>

 Cook Shire Boundary  Adjoining Local Governments
 Lot Boundaries  Roads

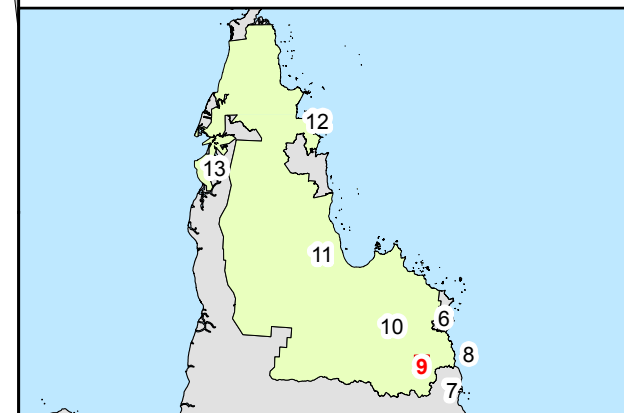
Disclaimer
While every care is taken to ensure the accuracy of this map, Cook Shire Council makes no representations or warranties about its accuracy, reliability, completeness or suitability for any particular purpose and disclaims all responsibility and all liability (including without limitation, liability in negligence) for all expenses, losses, damage (including direct or consequential damage) and costs which might incur as a result of the data being inaccurate or incomplete in any way and for any reason.
© Copyright Cook Shire Council

Cadastral Disclaimer
Despite the State of Queensland's best efforts, the Queensland Government makes no representations or warranties in relation to the information, and, to the extent permitted by law, exclude or limit all warranties relating to correctness, accuracy, reliability, completeness, or currency and all liability for any direct, indirect or consequential costs, losses, damages and expenses incurred in any way (including but not limited to that arising from negligence) in connection with any use of or reliance on the information.
© The State of Queensland (2016)

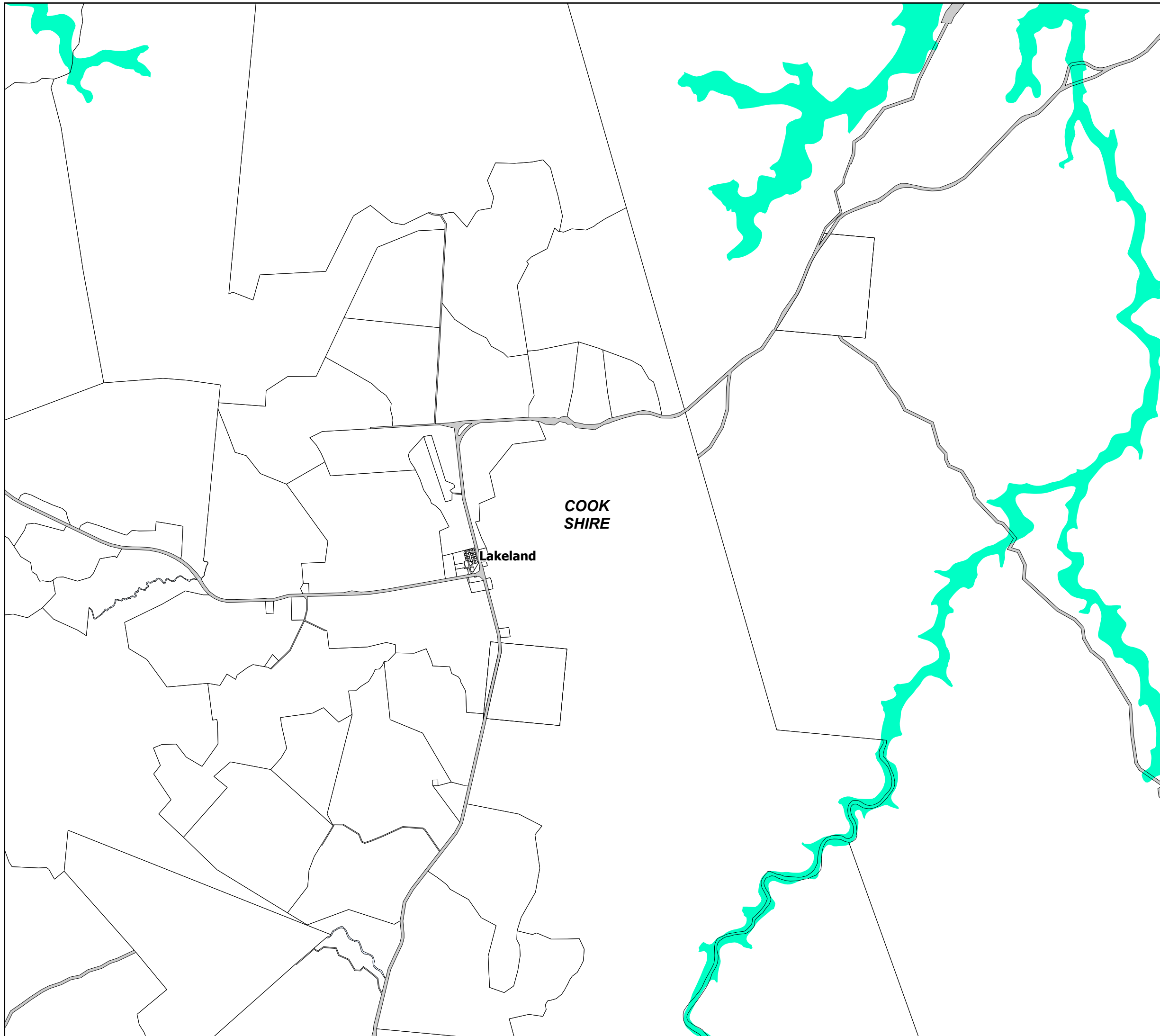
Geocentric Datum of Australia 1994 (GDA94) - Map Grid of Australia - Zone 55

 Scale: 1:75,000 1 cm = 750 m (A3 Print)
 0 2 4 Km
Date: 28/04/2016

INDEX MAP



Overlay Map - OM5.9



**Flood and Other Coastal Hazards
Overlay**

Laura

Legend

- Medium Hazard Area (River Flooding)
- High Hazard Area (River Flooding)
- Potential Flood Hazard Area

***Note:**
The Erosion Prone Area is based on data generated by the State of Queensland and is indicative only. To determine the exact extent of the Erosion Prone Area, please refer to the statutory mapping available at:
<https://www.ehp.qld.gov.au/coastal/management/maps/index.html>

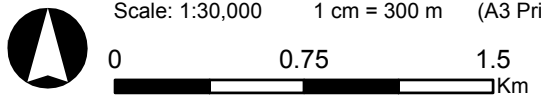
- Cook Shire Boundary
- Adjoining Local Governments
- Lot Boundaries
- Roads

Disclaimer
While every care is taken to ensure the accuracy of this map, Cook Shire Council makes no representations or warranties about its accuracy, reliability, completeness or suitability for any particular purpose and disclaims all responsibility and all liability (including without limitation, liability in negligence) for all expenses, losses, damage (including direct or consequential damage) and costs which might incur as a result of the data being inaccurate or incomplete in any way and for any reason.
© Copyright Cook Shire Council

Cadastral Disclaimer
Despite the State of Queensland's best efforts, the Queensland Government makes no representations or warranties in relation to the information, and, to the extent permitted by law, exclude or limit all warranties relating to correctness, accuracy, reliability, completeness, or currency and all liability for any direct, indirect or consequential costs, losses, damages and expenses incurred in any way (including but not limited to that arising from negligence) in connection with any use of or reliance on the information.
© The State of Queensland (2016)

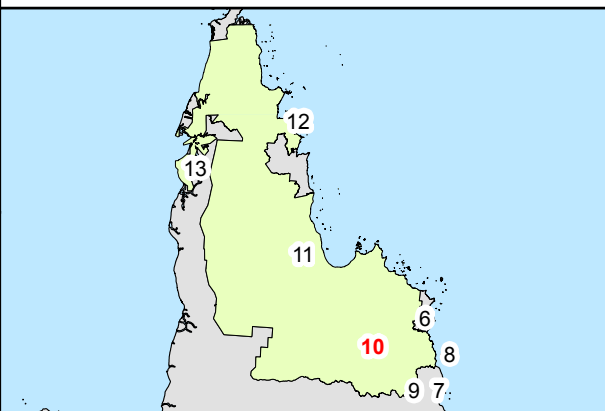
Geocentric Datum of Australia 1994 (GDA94) - Map Grid of Australia - Zone 55

Scale: 1:30,000 1 cm = 300 m (A3 Print)

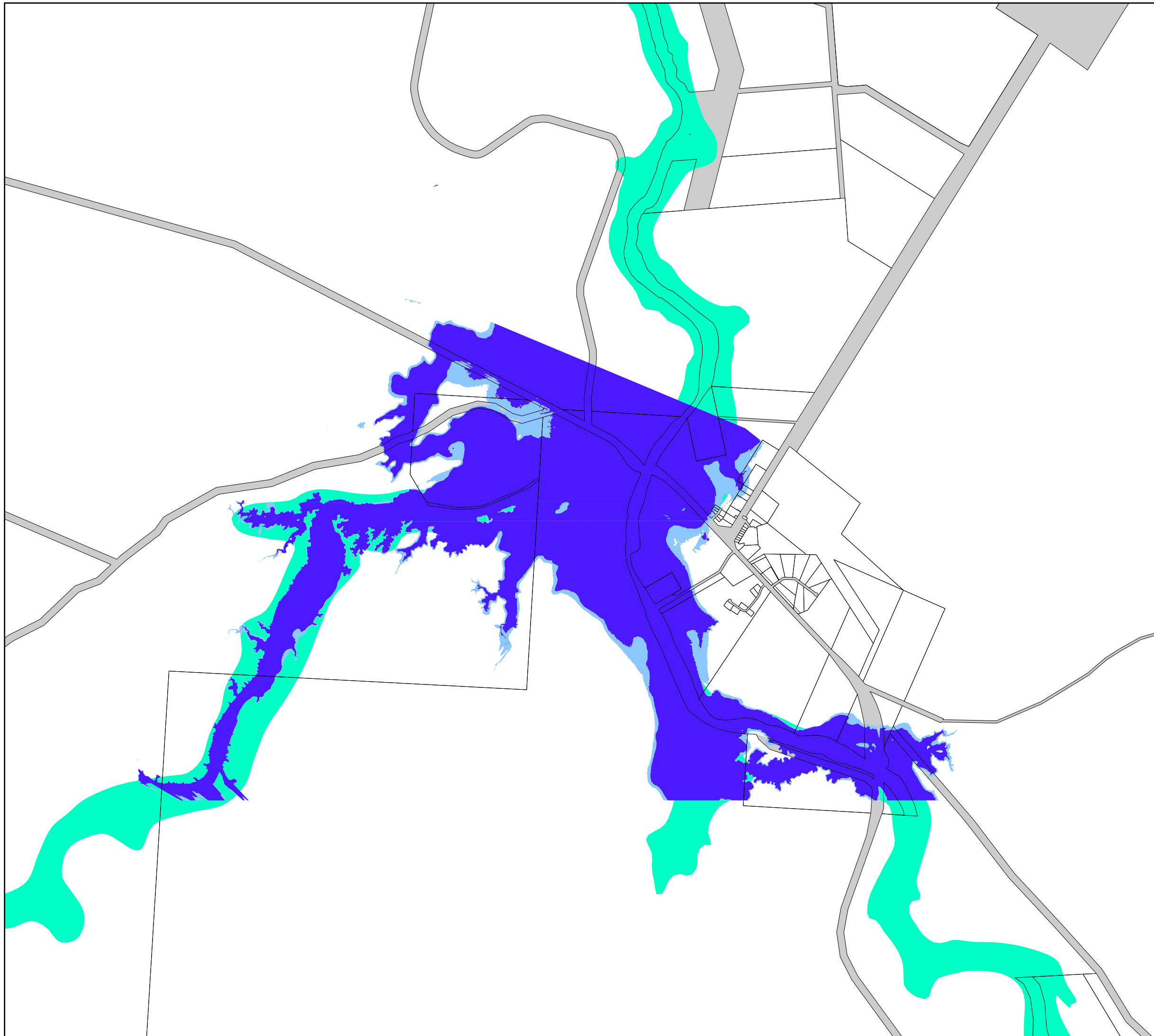


Date: 28/04/2016

INDEX MAP



Overlay Map - OM5.10



**Flood and Other Coastal Hazards
Overlay**

Coen

Legend

- Medium Hazard Area (River Flooding)
- High Hazard Area (River Flooding)
- Potential Flood Hazard Area

***Note:**
The Erosion Prone Area is based on data generated by the State of Queensland and is indicative only. To determine the exact extent of the Erosion Prone Area, please refer to the statutory mapping available at:
<https://www.ehp.qld.gov.au/coastal/management/maps/index.html>

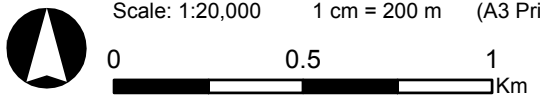
- Cook Shire Boundary
- Adjoining Local Governments
- Lot Boundaries
- Roads

Disclaimer
While every care is taken to ensure the accuracy of this map, Cook Shire Council makes no representations or warranties about its accuracy, reliability, completeness or suitability for any particular purpose and disclaims all responsibility and all liability (including without limitation, liability in negligence) for all expenses, losses, damage (including direct or consequential damage) and costs which might incur as a result of the data being inaccurate or incomplete in any way and for any reason.
© Copyright Cook Shire Council

Cadastral Disclaimer
Despite the State of Queensland's best efforts, the Queensland Government makes no representations or warranties in relation to the information, and, to the extent permitted by law, exclude or limit all warranties relating to correctness, accuracy, reliability, completeness, or currency and all liability for any direct, indirect or consequential costs, losses, damages and expenses incurred in any way (including but not limited to that arising from negligence) in connection with any use of or reliance on the information.
© The State of Queensland (2016)

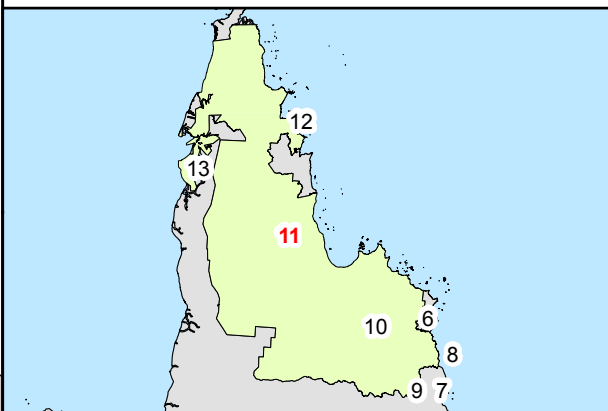
Geocentric Datum of Australia 1994 (GDA94) - Map Grid of Australia - Zone 54

Scale: 1:20,000 1 cm = 200 m (A3 Print)

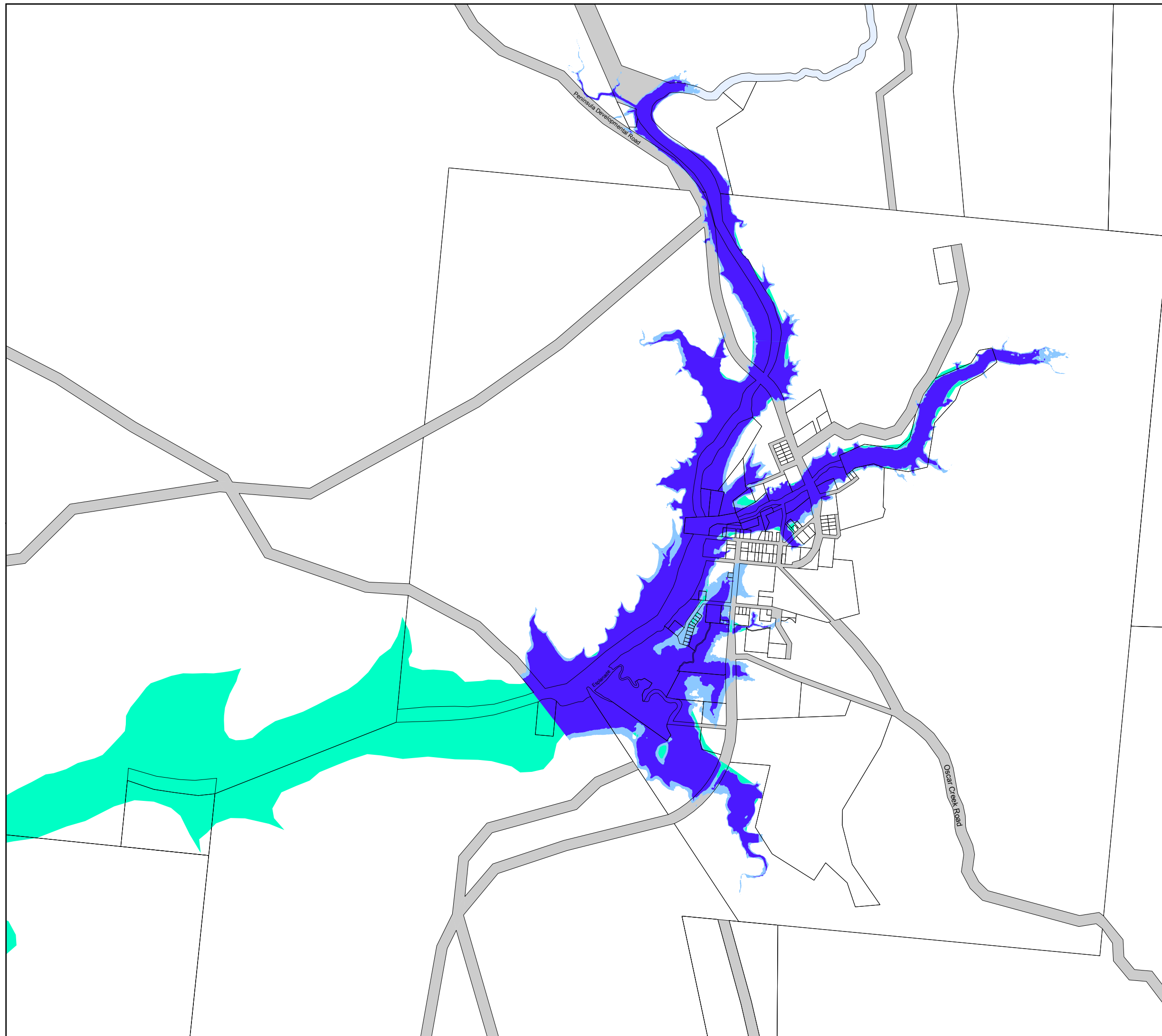


Date: 28/04/2016

INDEX MAP





Overlay Map - OM5.11



**Flood and Other Coastal Hazards
Overlay**

Portland Roads

Legend

-  Potential Flood Hazard Area
-  Erosion Prone Area*

***Note:**
The Erosion Prone Area is based on data generated by the State of Queensland and is indicative only. To determine the exact extent of the Erosion Prone Area, please refer to the statutory mapping available at:
<https://www.ehp.qld.gov.au/coastal/management/maps/index.html>

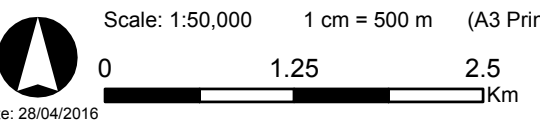
-  Cook Shire Boundary
-  Adjoining Local Governments
-  Lot Boundaries
-  Roads

Disclaimer
While every care is taken to ensure the accuracy of this map, Cook Shire Council makes no representations or warranties about its accuracy, reliability, completeness or suitability for any particular purpose and disclaims all responsibility and all liability (including without limitation, liability in negligence) for all expenses, losses, damage (including direct or consequential damage) and costs which might incur as a result of the data being inaccurate or incomplete in any way and for any reason.
© Copyright Cook Shire Council

Cadastral Disclaimer
Despite the State of Queensland's best efforts, the Queensland Government makes no representations or warranties in relation to the information, and, to the extent permitted by law, exclude or limit all warranties relating to correctness, accuracy, reliability, completeness, or currency and all liability for any direct, indirect or consequential costs, losses, damages and expenses incurred in any way (including but not limited to that arising from negligence) in connection with any use of or reliance on the information.
© The State of Queensland (2016)

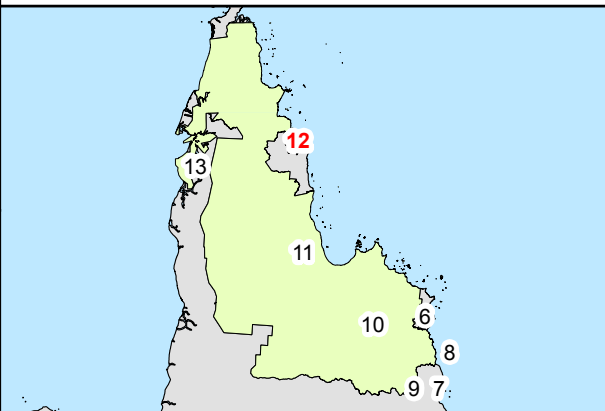
Geocentric Datum of Australia 1994 (GDA94) - Map Grid of Australia - Zone 54

Scale: 1:50,000 1 cm = 500 m (A3 Print)

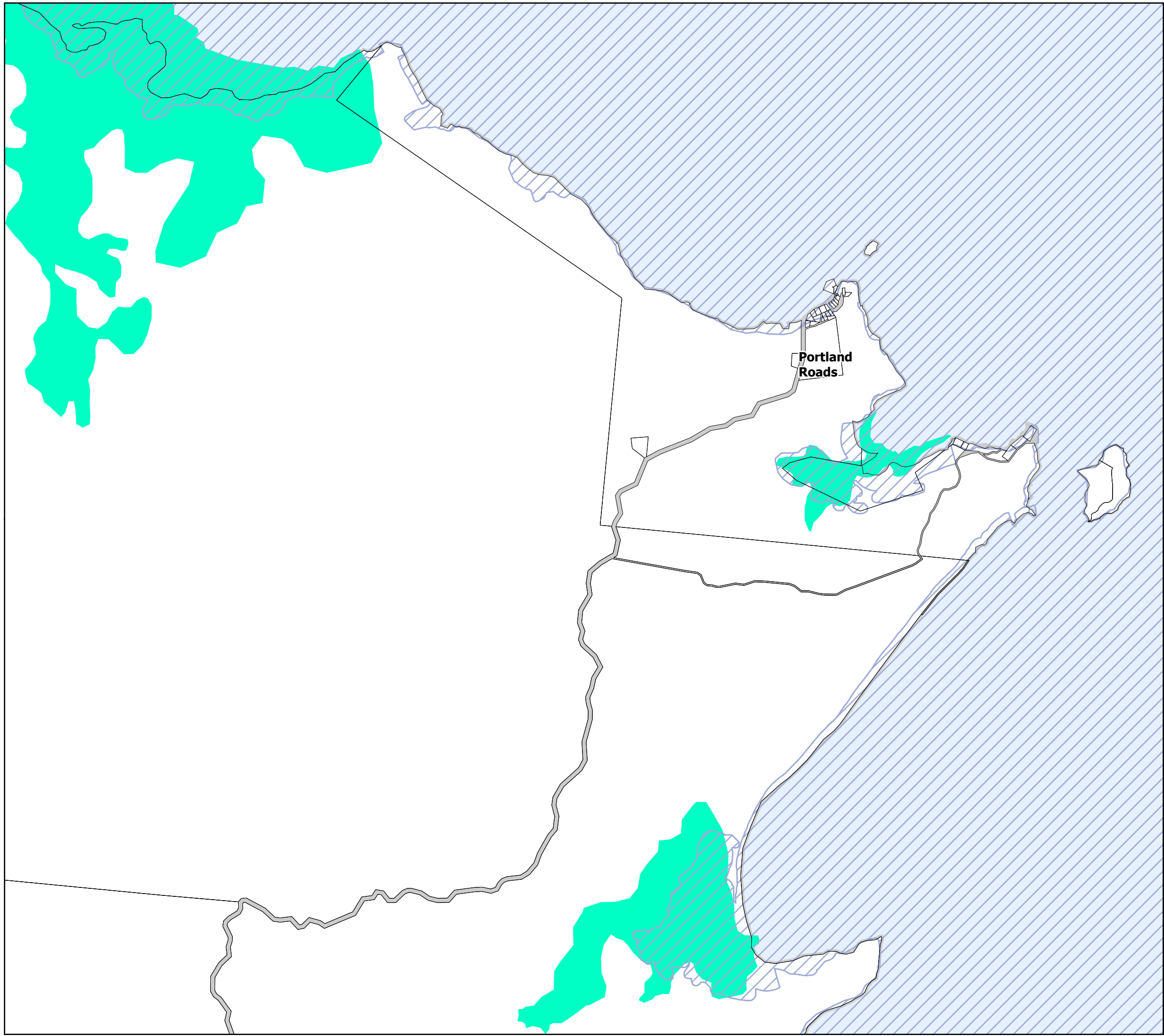


Date: 28/04/2016

INDEX MAP



Overlay Map - OM5.12









Cook Shire COUNCIL

COOK SHIRE COUNCIL PLANNING SCHEME OVERLAY MAP

Flood and Other Coastal Hazards Overlay

Weipa

Legend

-  Medium Hazard Area (Storm Tide Inundation)
-  High Hazard Area (Storm Tide Inundation)
-  Potential Flood Hazard Area
-  Erosion Prone Area*

*Note:
The Erosion Prone Area is based on data generated by the State of Queensland and is indicative only. To determine the exact extent of the Erosion Prone Area, please refer to the statutory mapping available at:
<https://www.ehp.qld.gov.au/coastal/management/maps/index.html>

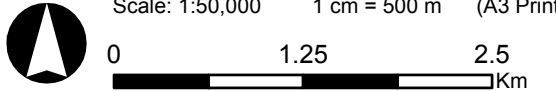
-  Cook Shire Boundary
-  Adjoining Local Governments
-  Lot Boundaries
-  Roads

Disclaimer
While every care is taken to ensure the accuracy of this map, Cook Shire Council makes no representations or warranties about its accuracy, reliability, completeness or suitability for any particular purpose and disclaims all responsibility and all liability (including without limitation, liability in negligence) for all expenses, losses, damage (including direct or consequential damage) and costs which might incur as a result of the data being inaccurate or incomplete in any way and for any reason.
© Copyright Cook Shire Council

Cadastral Disclaimer
Despite the State of Queensland's best efforts, the Queensland Government makes no representations or warranties in relation to the information, and, to the extent permitted by law, exclude or limit all warranties relating to correctness, accuracy, reliability, completeness, or currency and all liability for any direct, indirect or consequential costs, losses, damages and expenses incurred in any way (including but not limited to that arising from negligence) in connection with any use of or reliance on the information.
© The State of Queensland (2016)

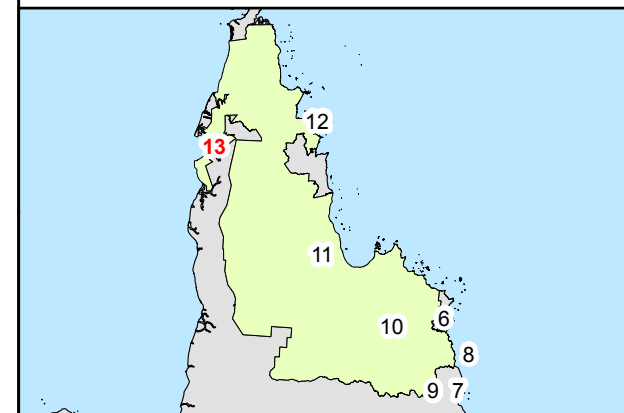
Geocentric Datum of Australia 1994 (GDA94) - Map Grid of Australia - Zone 54

Scale: 1:50,000 1 cm = 500 m (A3 Print)



Date: 28/04/2016

INDEX MAP



Overlay Map - OM5.13

